

UPPER BRIDGE STREET REDEVELOPMENT DESIGN LAYOUT

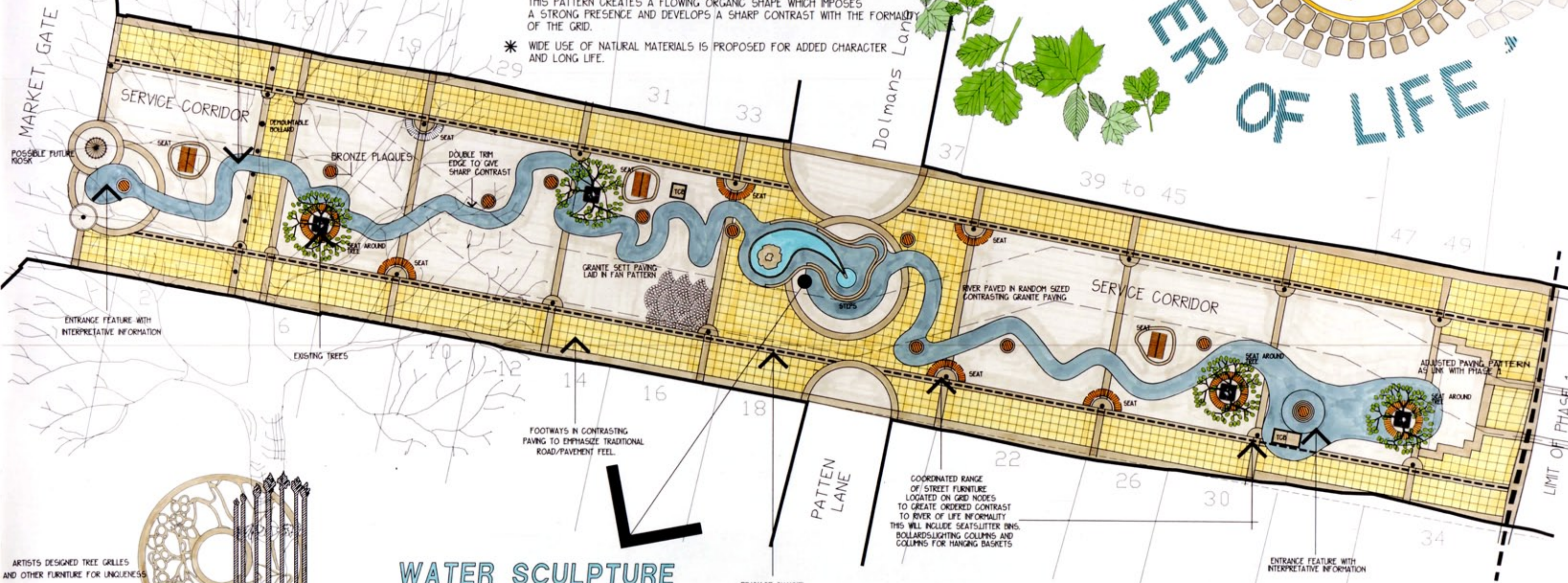
SET FLUSH WITH THE PAVEMENT ALONG THE LENGTH OF THE RIVER ARE TWELVE BRONZE DISCS (3ft diameter) PORTRAYING IN LOW RELIEF THE LEAF AND FRUIT DESIGN OF TWELVE VARIETIES OF LOCAL TREE. ALSO CAST WITHIN THEM ARE NAMES OF THE MONTH, JANUARY AT THE TOP THROUGH TO DECEMBER AT THE BOTTOM. WORDS SUCH AS GOODNESS AND KINDNESS ARE ALSO INCLUDED TO REPRESENT THE POSITIVE FRUIT OF OUR LIVES.

DESIGN PHILOSOPHY

THE DESIGN REVOLVES AROUND TWO MAIN THEMES WHICH TOGETHER CREATE A UNIQUE BLEND AND CONTRAST:

- * THE BACKGROUND THEME IS BASED ON A GRID GEOMETRY TO EMPHASIZE THE FORMER STREET PATTERN WITH FOOTWAYS AND ROADWAY. THIS PROVIDES THE STRONG DISCIPLINE WHICH DEFINES PAVING PATTERNS, DRAINAGE AND LOCATION OF STREET FURNITURE AND AIMS TO STRENGTHEN THE LINK WITH THE TOWN'S HERITAGE AND OTHER PHASES OF THE TOWN CENTRE REDEVELOPMENT.
- * SUPERIMPOSED OVER THE GRID IS THE RIVER OF LIFE THEME WHICH SYMBOLISES THE PASSAGE OF THE RIVER MERSEY THROUGH THE TOWN. THIS PATTERN CREATES A FLOWING ORGANIC SHAPE WHICH IMPOSES A STRONG PRESENCE AND DEVELOPS A SHARP CONTRAST WITH THE FORMALITY OF THE GRID.
- * WIDE USE OF NATURAL MATERIALS IS PROPOSED FOR ADDED CHARACTER AND LONG LIFE.

RIVER OF LIFE THEME DENOTING COURSE OF RIVER MERSEY THROUGH WARRINGTON. BRONZE PLAQUES WITH LOCAL NATURE THEME GEOGRAPHICALLY LOGATED. MATERIALS CHOSEN TO CREATE A SHARP CONTRAST BETWEEN EDGE AND RIVER BED.



WATER SCULPTURE

THE CENTRAL FEATURE OF THE RIVER OF LIFE THEME IS WATER SCULPTURE CONSISTING OF A LARGE BOULDER FROM WHICH WATER GUSHES AND RUNS ALONG A STYLISED RIVER BED OF COBBLES FINALLY CASCADING INTO A BRONZE DISH. ALONG THE EDGE OF THE CHANNEL IN BRONZE WILL BE VARIOUS IMAGES FROM NATURE.